

# THE RECYCLER

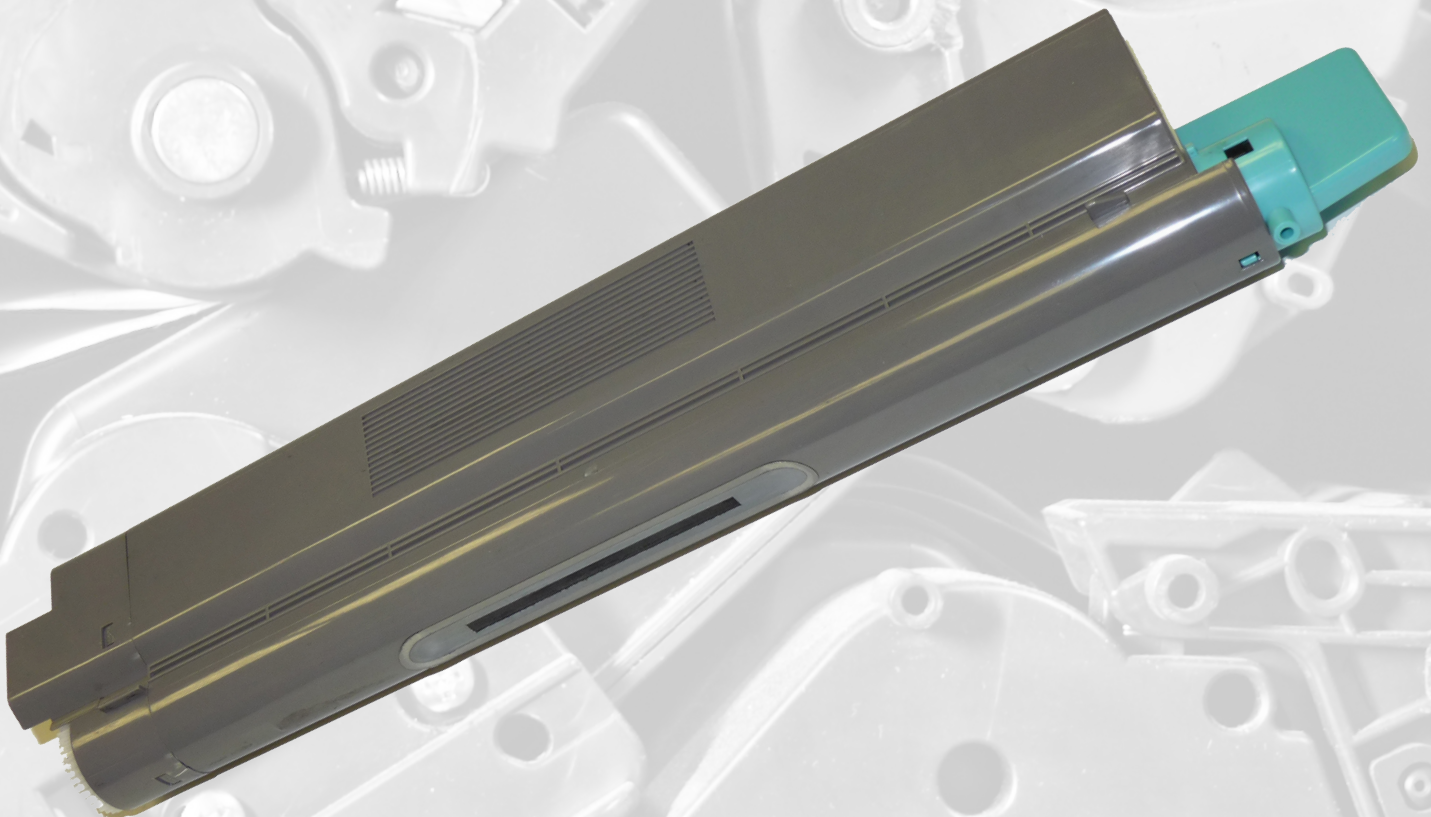
Trade magazine for the toner and inkjet remanufacturing industry ~ making waste work

incorporating  
**RechargEast**  
MAGAZINE



# Technical Guide

## Remanufacturing the Lexmark C925 toner cartridge



By Mike Josiah and the Technical Staff at Uninet

# Remanufacturing the Lexmark C925 toner cartridge

By Mike Josiah and the Technical Staff at Uninet

The Lexmark C925 series of printers are based on a 30ppm colour LED engine with a maximum resolution of 600 x 600dpi. The first page out is stated to be under nine seconds. The printer's memory is fixed at 64MB.

The toner cartridges are just simple tubes. They will be included in a future "easy to do" cartridge series, but there has been a lot of questions on them, so we're also doing them now.

The cartridges used in these machines are as follows - note that the X925 series uses different cartridges:

C925H2KG	8,500 pages	\$178.99 (€157.57)*	
C925H2CG	7,500 pages	\$242.99 (€213.91)*	
C925H2MG	7,500 pages	\$242.99 (€213.91)*	
C925H2YG	7,500 pages	\$242.99 (€213.91)*	
X925H2KG	8,500 pages	\$219.99 (€193.67)*	X925 ONLY
X925H2CG	7,500 pages	\$219.99 (€193.67)*	X925 ONLY
X925H2MG	7,500 pages	\$219.99 (€193.67)*	X925 ONLY
X925H2YG	7,500 pages	\$219.99 (€193.67)*	X925 ONLY

\*Pricing as of March 2016

Other machines that use this cartridge include:

C925de  
X925de  
C925dte

**As these are so fast and simple to do they are nice profit centres!**

## REQUIRED SUPPLIES

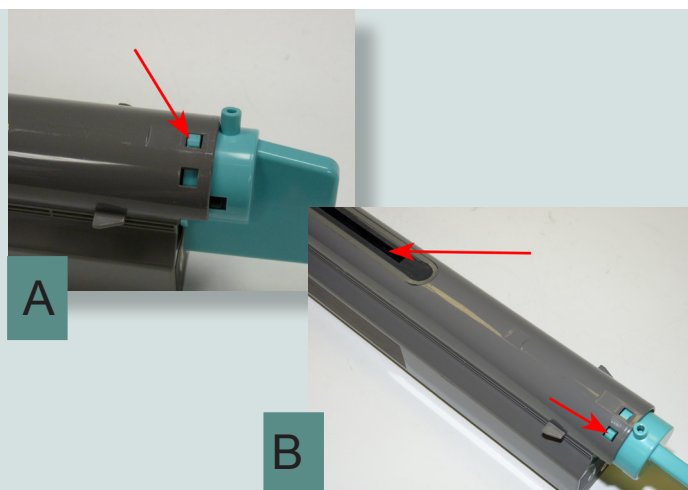
- Toner for use in the Lexmark C925 series
- New replacement chip (Check for the proper region and if C925 or X925)

## REQUIRED TOOLS

- Toner-approved vacuum
- Two small common flathead screwdrivers

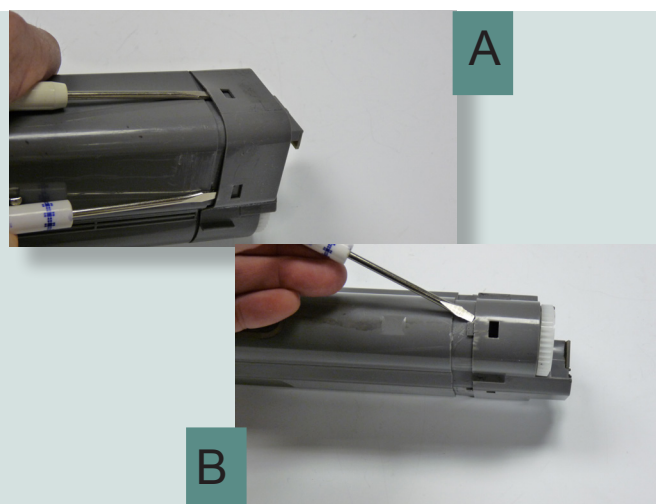
## STEP ONE

Open the toner port by pressing down on the handle tab and turn the handle. Dump out as much toner as you can (see Figures A and B).



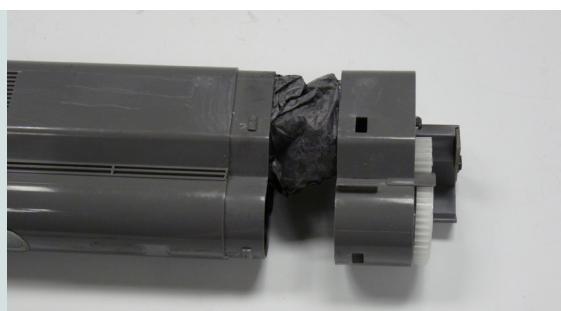
## STEP TWO

Using two common screwdrivers, gently pry up each tab until the end cap starts to come loose. Be careful here! The plastic by the tabs can break if too much force is used (see Figures A and B).



## STEP THREE

Remove the end cap.



## STEP FOUR

Slide the end cap completely out from the toner chamber. The shaft with the bag contains the waste toner.





## STEP FIVE

Remove any remaining toner from the chamber.



## STEP SIX

If you removed the spring during cleaning, make sure the cross bar is facing out when re-installed.



## STEP SEVEN

Cut a small slot in the waste bag, being careful not to cut through both sides.



## STEP EIGHT



Carefully vacuum out all the waste toner from the bag.

## STEP NINE

Using a good packing tape, seal the slot in the waste bag.



## STEP TEN

Close the port by turning the handle back, so the tab locks in place.



## STEP ELEVEN

Fill with toner for use in the Lexmark C925.



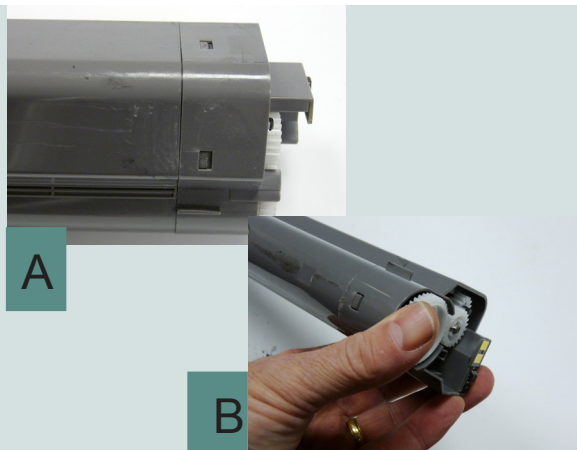
## STEP THIRTEEN

Slide the end cap back in place. Try to keep the filled toner chamber spring side down and flat enough to get the waste bag inside, but not so flat the new toner flows out.



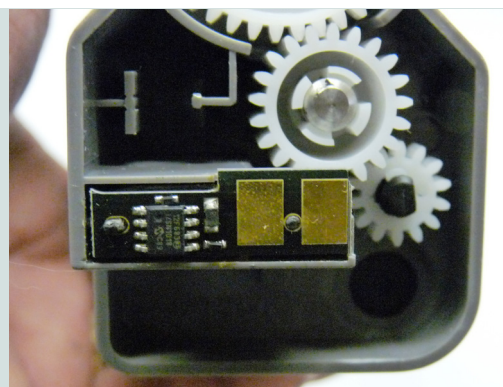
## STEP FOURTEEN

Make sure all the tabs lock (see Figure A). If the end cap does not fit, turn the large gear until it does. This lines up the gear with the cross bar on the spring (see Figure B).



## STEP FIFTEEN

Remove the old chip and install the new one.



**That's it, you're done! Nice and easy!**

## THE RECYCLER - ISSN 2045-2047 (Print)

### THE RECYCLER TEAM

#### Managing Editor

Stefanie Unland – [s.unland@therecycler.com](mailto:s.unland@therecycler.com)

#### Deputy Editor

William Roszczyk – [w.roszczyk@therecycler.com](mailto:w.roszczyk@therecycler.com)

#### Editorial Assistant

Gloria Leverett – [g.leverett@therecycler.com](mailto:g.leverett@therecycler.com)

#### Designer

Ian Winter - [production@therecycler.com](mailto:production@therecycler.com)

#### Publishing Consultant

Anthony Critchley – [a.critchley@therecycler.com](mailto:a.critchley@therecycler.com)

### THE SMALL PRINT

Articles may be photocopied for the private use of paid subscribers only. For other copying or republication please contact *The Recycler*. *The Recycler* (ISSN 2045-2047 (Print)) is published 12 times per year (every four weeks) by David Connett. Copyright 1997 – 2015 by David Connett. The editorial content does not reflect the opinions of the publisher or editorial team. *The Recycler* is printed in the United Kingdom by Buxton Press Limited. The regular retail price of *The Recycler* is £120 for 12 months (12 issues) worldwide, and is delivered free to your home or office worldwide.

### COMPLAINTS & CORRECTIONS

The Recycler's policy is to correct substantial errors as soon as possible. Corrections appear on the relevant web page and/or in the magazine and significant corrections are collated in our corrections and clarifications column. To complain or advise of a correction please visit our "How to Complain" web page at [www.therecycler.com/about-us/how-to-complain/](http://www.therecycler.com/about-us/how-to-complain/)

We are a member of the Independent Press Standards Organisation and commit to abiding to the Editors' Code. More information about IPSO and the Code is available at [www.ipso.co.uk](http://www.ipso.co.uk)

### THE RECYCLER

Wittas House, Two Rivers,  
Station Lane, Witney,  
United Kingdom OX28 4BH

Phone: +44 (0) 1993 899 800

Fax: +44 (0) 1993 226 899

Email: [info@therecycler.com](mailto:info@therecycler.com)

Website: [www.therecycler.com](http://www.therecycler.com)

Bureau Office – Australia  
Graham McCusker

Phone: +61 (0) 416 813 700

Email: [g.mccusker@therecycler.com](mailto:g.mccusker@therecycler.com)

Bureau Office – Germany  
Stefanie Unland

Phone: +49 (0) 2582 9910 701

Email: [info@therecycler.com](mailto:info@therecycler.com)

Bureau Office – United States

Email: [usa@therecycler.com](mailto:usa@therecycler.com)

[www.therecycler.com/contactus](http://www.therecycler.com/contactus)

# THE RECYCLER

Trade magazine for the toner and inkjet remanufacturing industry ~ making waste work

RechargEast  
MAGAZINE

We **understand** remanufacturing  
and deliver comprehensive news  
from the **remanufacturing industry**.

We deliver solutions for brand  
**communication** and provide  
industry **knowledge**.

[www.therecycler.com](http://www.therecycler.com)